



Your Enclosure Source®

Saginaw Control & Engineering
95 Midland Road
Saginaw, MI 48638-5770
Phone: (800)234-6871
Fax: (989)799-4524
<http://www.saginawcontrol.com>

Part Information - SCE-FK1224

→ SCE-FK1224

Application -

Can be installed on most wall mounted enclosures with a width of 20" or more. Can also be installed on SCE Free Standing Enclosures. Kits include two stands. This configuration can be ordered in special sizes. Consult a factory representative for price and delivery. Made from carbon steel. "SS" parts are made from Stainless Steel Type 304. "SS6" parts are made from Stainless Steel Type 316/316L.

Finish -

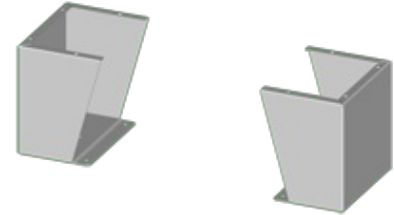
ANSI-61 gray powder coat.
"SS" & "SS6" with #4 brushed finish.

Industry Standards - (IS17)

NEMA Not Applicable
UL Not Applicable
CSA N/A

Product Specifications -

Part Number: SCE-FK1224
Description: Kit, Floor
Height: 12.00"
Width: 24.00"
Depth: 9.12"
Price Code: P2
List Price: \$201.17
Catalog Page: 306
Est. Ship Weight: 43.00 lbs



[Download CAD Package](#)
[Add to Bill of Material](#)

Similar Part Numbers -

[SCE-FK0612](#) - Kit, Floor
[SCE-FK0618](#) - Kit, Floor
[SCE-FK0624](#) - Kit, Floor
[SCE-FK1212](#) - Kit, Floor
[SCE-FK1212SS](#) - Kit, S.S. Floor
[SCE-FK1212SS6](#) - Kit, S.S. Floor
[SCE-FK1216](#) - Kit, Floor
[SCE-FK1216SS](#) - Kit, S.S. Floor
[SCE-FK1218](#) - Kit, Floor
[SCE-FK1218SS](#) - Kit, S.S. Floor

Installation Information -

[Floor Stand Hole Layout](#)

Saginaw Control and Engineering
95 Midland Road
Saginaw, MI 48638-5770
(800)234-6871
Fax: (989)799-4524
SCE@SaginawControl.com